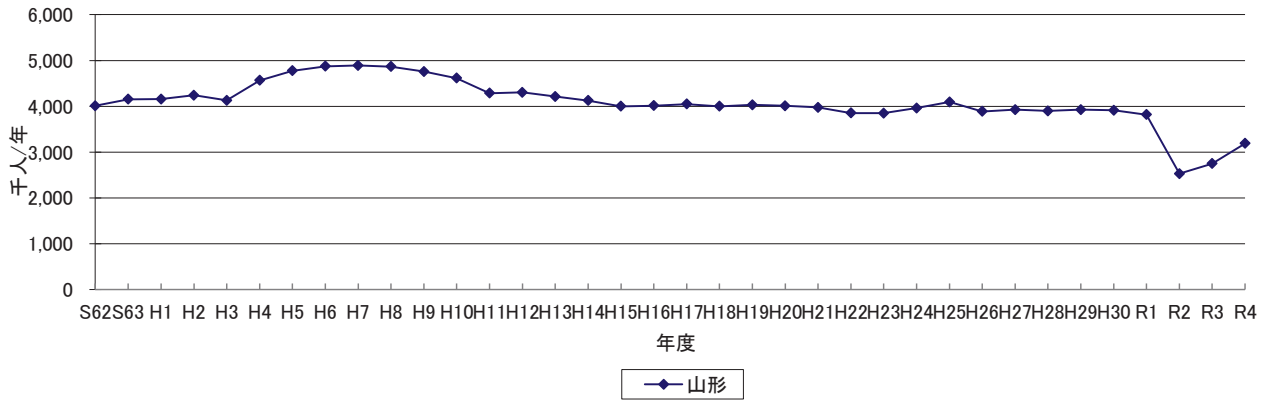


	S82	S83	H1	H2	H3	H4	H5	H6	H7	H8	H9	H10	H11	H12	H13	H14	H15	H16	H17	H18	H19	H20	H21	H22	H23	H24	H25	H26	H27	H28	H29	H30	R1	R2	R3	R4	通要		
【米坂線】																																							
(米沢)																																							
熊 118.2	133.6	139.4	160.8	164.6	155.5	140.5	158.2	164.7	169.4	134.9	134.7	143.1	152.2	146.0	138.9	142.0	158.8																						
熊 79.1	57.9	67.8	70.0	70.4	65.3	69.1	65.2	72.0	70.6	78.9	89.1	85.6	80.3	70.1	74.1	80.7	89.4																						
熊 37.4	41.1	5.4	6.1	6.1	6.3	6.1	4.7	5.0	5.9	7.3	6.2	4.0	4.4	5.5	5.5	5.8																							
熊 35.1	25.2	16.7	18.4	17.9	20.0	20.5	20.1	15.6	15.5	14.2	12.8	12.8	14.8	14.2	16.1	15.0																							
熊 159.2	161.0	154.5	159.7	158.4	148.5	148.5	148.5	155.7	155.5	148.5	148.5	148.5	148.5	148.5	148.5	148.5																							
熊 22.7	24.4	26.0	23.0	23.1	21.0	24.7	25.0	22.9	21.0	24.1	24.1	22.1	21.0	22.1	21.0	17.5																							
熊 54.9	128.1	228.6	250.4	255.6	253.6	222.0	220.7	203.8	202.1	185.3	182.1	168.1	160.2	148.9	146.4	140.5	136.9	127.8	105.1	106.9	94.2	91.6	90.5	91.1	85.8	82.5	78.4	70.6	82.1	84.0	73.9	53.3	48.2	45.3					
熊 36.1	35.7	29.8	31.6	30.3	31.7	32.3	30.0	30.0	30.0	38.9	38.6	39.2	41.6	35.0	36.9	36.5	35.4																						
熊 20.4	11.9	13.5	16.8	16.4	21.5	20.3	20.2	18.7	16.0	15.4	15.2	16.1	13.9	13.1	10.7	9.2	8.8																						
熊 13.5	11.4	6.0	6.6	6.2	7.6	7.1	5.1	6.2	6.4	6.2	6.0	5.5	4.7	4.0	3.7	2.2																							
熊 14.2	11.1	8.3	10.4	10.4	10.2	9.5	7.8	7.7	7.4	8.3	8.0	6.9	5.8	5.5	4.6																								
熊 9.5	8.9	6.7	6.4	6.5	7.3	6.6	5.4	5.4	5.2	5.2	5.9	4.8	3.5	4.7	3.7	2.6	2.9																						
熊 102.9	102.4	91.4	87.9	83.2	84.3	78.3	71.5	65.1	63.2	58.5	58.1	56.0	58.0	55.5	51.8	50.7	50.0	48.6	55.5	56.4	56.6	50.4	51.1	48.3	44.9	38.4	35.8	38.8	41.2	39.8	42.3	45.4	39.4	34.3	24.1				
熊 1.1	1.2	1.3	0.4	0.3	0.2	0.2	0.1	0.3																															
熊 696.2	744.6	818.4	875.7	876.6	866.1	810.4	824.2	810.3	813.1	760.7	774.0	755.0	750.4	684.4	657.8	652.8	673.1	322.3	289.1	292.8	276.7	273.4	269.7	260.7	272.3	265.9	240.2	244.7	233.3	247.1	241.3	224.0	173.7	162.4	142.1				

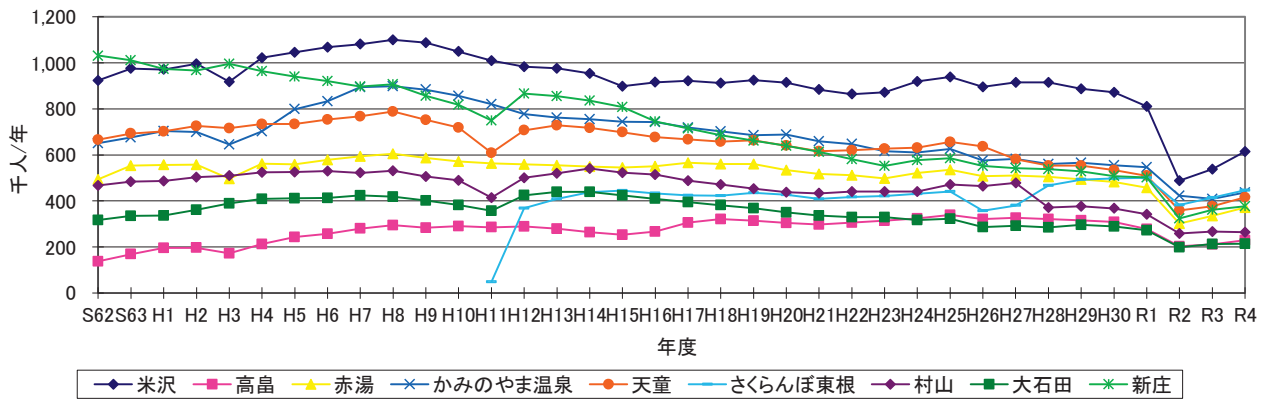
	S82	S83	H1	H2	H3	H4	H5	H6	H7	H8	H9	H10	H11	H12	H13	H14	H15	H16	H17	H18	H19	H20	H21	H22	H23	H24	H25	H26	H27	H28	H29	H30	R1	R2	R3	R4	通要		
【オクワン線(併線)】																																							
(赤澤)																																							
熊 50.3	141.0	138.9	124.5	137.8	134.5	133.5	133.8	127.1	125.9	121.9	118.6	113.2	106.0	104.4	98.5	99.5	92.8	88.1	88.5	85.2	82.2	84.2	83.7	80.3	73.0	70.0	68.0	66.7	66.0	65.9	60.5	42.0	48.0	47.7					
熊 2.0	2.7	2.7	2.5	2.6	3.7	3.7	3.4	3.1	3.0	3.3	3.1	3.0	3.3	3.1	3.0	2.9	2.9	2.7	2.6	2.6	2.5	2.5	2.3	2.2	2.1	2.1	2.1	2.1	2.1	2.1	2.1	2.1	2.1	2.1	1.5	1.7	1.7		
熊 200.9	195.9	175.9	174.5	166.8	175.9	158.1	169.3	157.8	178.9	168.6	163.3	150.1	144.1	134.9	132.9	125.4	126.6	118.2	112.2	110.1	107.3	111.6	114.4	113.7	109.0	99.2	96.1	92.3	90.6	89.7	89.5	82.3	57.1	65.3	64.9				
熊 34.4	33.3	33.1	32.0	30.4	30.4	29.5	28.4	29.4	26.6	26.5	25.6	25.6	24.0	23.6	22.3	22.5	21.0	19.9	19.5	18.0	16.6	17.0	16.9	16.2	14.7	14.1	13.7	13.5	13.3	12.2	8.5	9.7	9.6						
熊 19.4	20.2	18.0	19.2	18.2	18.2	18.2	18.2	18.2	18.2	18.2	18.2	18.2	18.2	18.2	18.2	18.2	18.2	18.2	18.2	18.2	18.2	18.2	18.2	18.2	18.2	18.2	18.2	18.2	18.2	18.2	18.2	18.2	18.2	18.2	18.2	18.2	18.2		
熊 20.1	23.0	18.0	19.0	18.2	18.1	18.1	18.1	18.1	18.1	18.1	18.1	18.1	18.1	18.1	18.1	18.1	18.1	18.1	18.1	18.1	18.1	18.1	18.1	18.1	18.1	18.1	18.1	18.1	18.1	18.1	18.1	18.1	18.1	18.1	18.1	18.1	18.1	18.1	
熊 57.3	115.0	114.5	105.5	105.5	108.8	107.9	104.1	101.6	101.6	101.6	101.6	101.6	101.6	101.6	101.6	101.6	101.6	101.6	101.6	101.6	101.6	101.6	101.6	101.6	101.6	101.6	101.6	101.6	101.6	101.6	101.6	101.6	101.6	101.6	101.6	101.6	101.6	101.6	
熊 12.4	13.3	11.4	11.5	10.9	10.9	10.4	10.4	10.4	10.4	10.4	10.4	10.4	10.4	10.4	10.4	10.4	10.4	10.4	10.4	10.4	10.4	10.4	10.4	10.4	10.4	10.4	10.4	10.4	10.4	10.4	10.4	10.4	10.4	10.4	10.4	10.4	10.4	10.4	
熊 120.4	163.1	171.8	171.8	168.2	168.2	124.8	123.1	123.9	164.4	132.1	130.3	130.7	127.1	119.0	117.2	110.8	111.7	104.2	98.9	97.1	94.7	92.4	94.3	94.3	90.4	82.2	78.8	76.0	75.1	74.4	74.2	67.9	47.2	53.9	55.8				
熊 230.2	405.7	407.0	412.2	408.0	385.7	286.7	287.8	285.9	385.4	314.4	307.9	287.0	236.8	221.5	199.1	187.9	189.6	177.0	147.8	135.4	131.7	122.1	125.0	124.2	119.1	108.3	103.8	100.9	99.9	99.0	97.8	89.7	82.3	71.1	70.7				
熊 26.7	49.2	58.5	57.2	54.7	54.4	32.7	33.6	31.7	39.5	37.8	36.4	38.9	35.7	33.4	32.9	31.1	31.4	29.3	27.8	24.8	24.2	22.6	23.2	23.0	22.1	20.1	19.2	18.7	18.3	18.1	18.0	16.5	11.4	13.1	13.0				
熊 21.6	22.7	18.9	19.0	18.2	18.1	28.6	30.2	27.8	16.6	13.2	12.9	17.3	16.2	15.9	15.1	15.2	14.2	13.5	12.7	12.4	12.0	12.2	12.1	11.6	10.6	10.1	9.8	9.6	9.5	9.5	9.5	9.5	9.5	9.5	9.5	9.5	9.5	9.5	
熊 45.8	55.2	56.8	57.3	54.7	54.5	42.2	44.9	41.7	50.3	48.8	47.9	47.9	43.4	40.6	40.0	37.8	38.1	35.6	33.8	28.0	27.3	25.4	26.0	25.8	24.7	22.5	21.6	21.0	20.6	20.2	18.6	12.9	14.7	14.6					
熊 103.6	161.0	186.3	190.9	182.4	182.4	168.2	168.2	168.2	168.2	168.2	168.2	168.2	168.2	168.2	168.2	168.2	168.2	168.2	168.2	168.2	168.2	168.2	168.2	168.2	168.2	168.2	168.2	168.2	168.2	168.2	168.2	168.2	168.2	168.2	168.2	168.2	168.2	168.2	
熊 895.5	1247.2	1429.8	1444.7	1377.8	1370.9	1320.4	1324.2	1308.4	1321.4	1173.1	1140.7	1086.7	984.5	831.0	816.8	805.4	873.6	815.4	774.0	759.7	748.2	722.2	740.2	735.4	705.1	641.4	614.8	597.1	585.9	580.4	578.5	530.7	383.6	421.0	415.4				

	S82	S83	H1	H2	H3	H4	H5	H6	H7	H8	H9	H10	H11	H12	H13	H14	H15	H16
--	-----	-----	----	----	----	----	----	----	----	----	----	-----	-----	-----	-----	-----	-----	-----

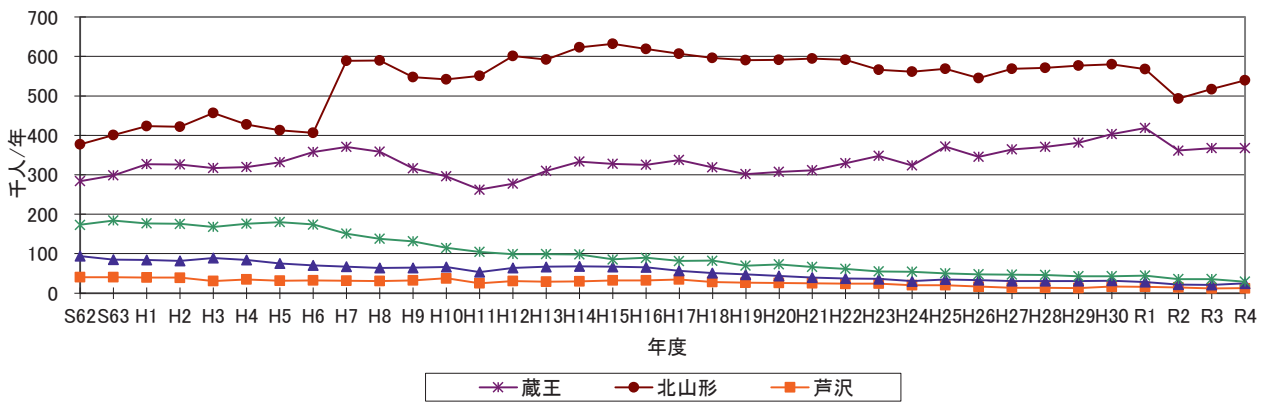
各駅乗車人数推移(奥羽本線:山形駅)



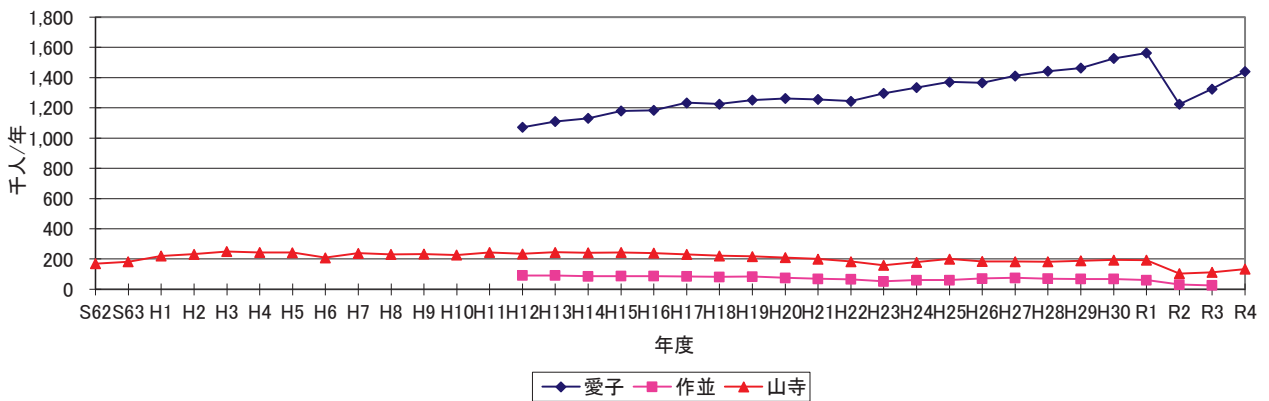
各駅乗車人数推移(奥羽本線:新幹線停車駅)



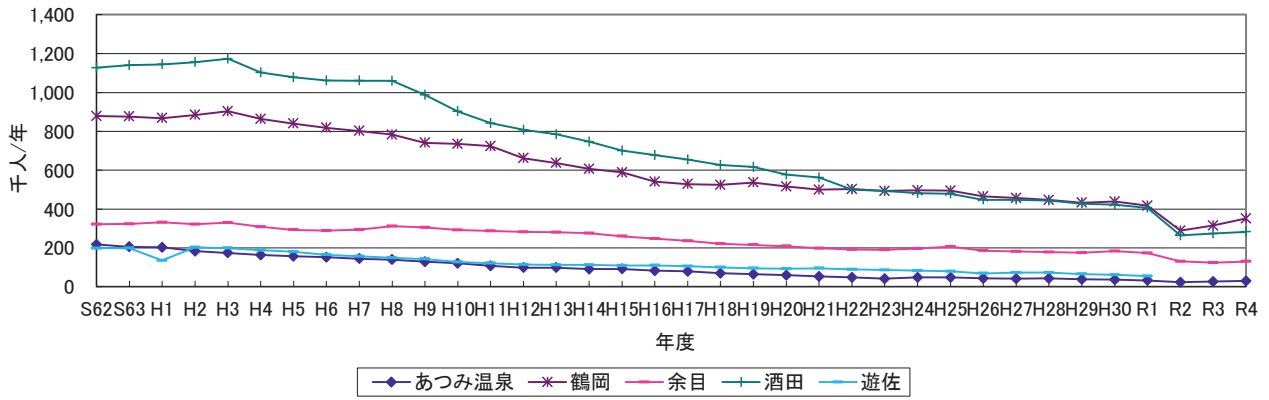
各駅乗車人数推移(奥羽本線:普通列車停車駅)



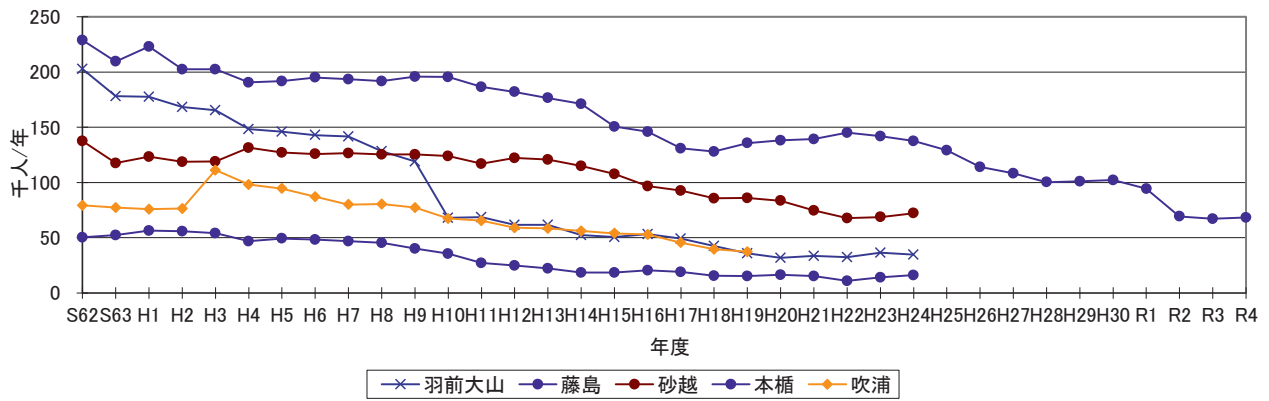
各駅乗車人数推移(仙山線)



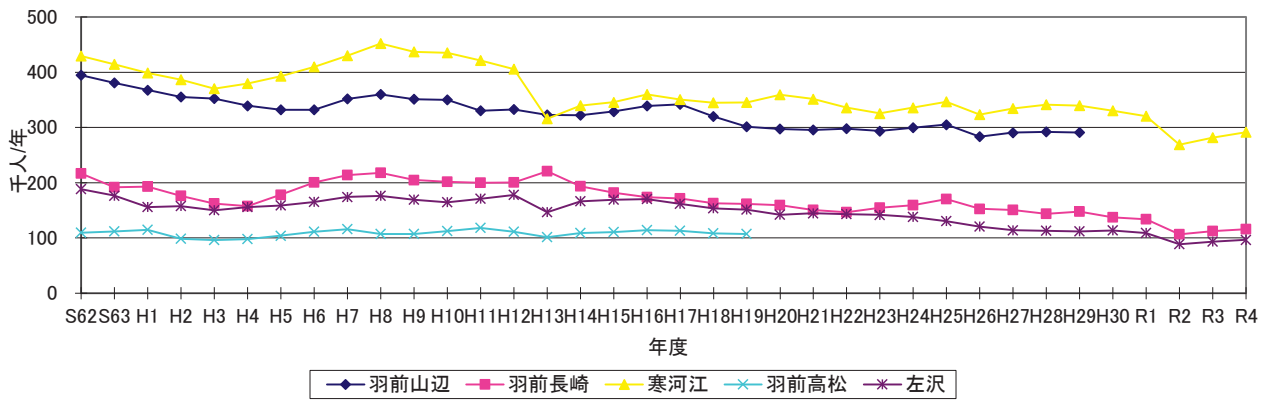
各駅乗車人数推移(羽越本線:特急停車駅)



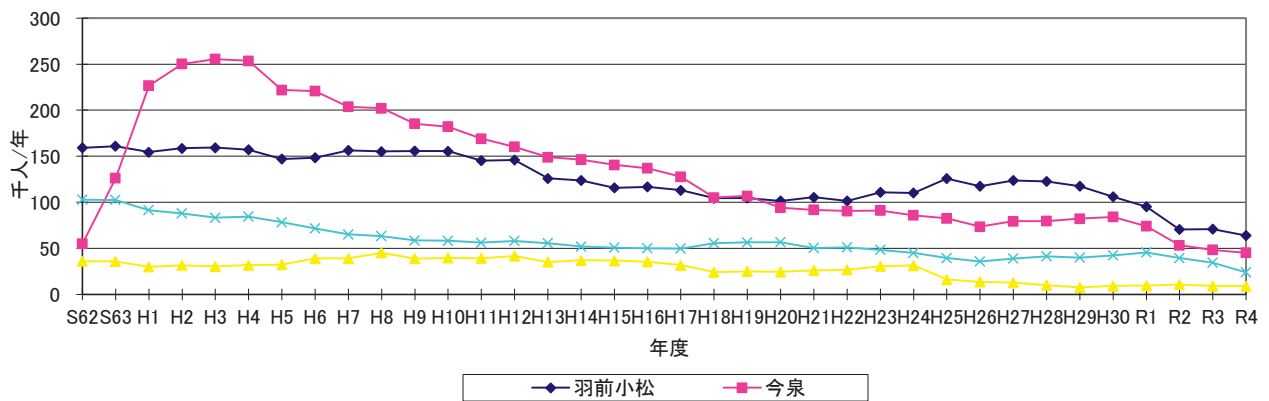
各駅乗車人数推移(羽越本線:その他)



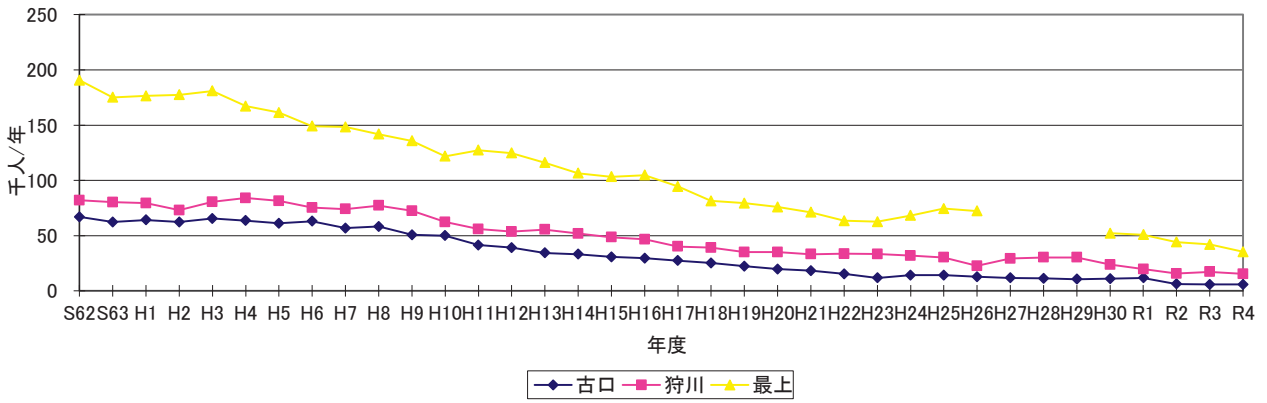
各駅乗車人数推移(左沢線)



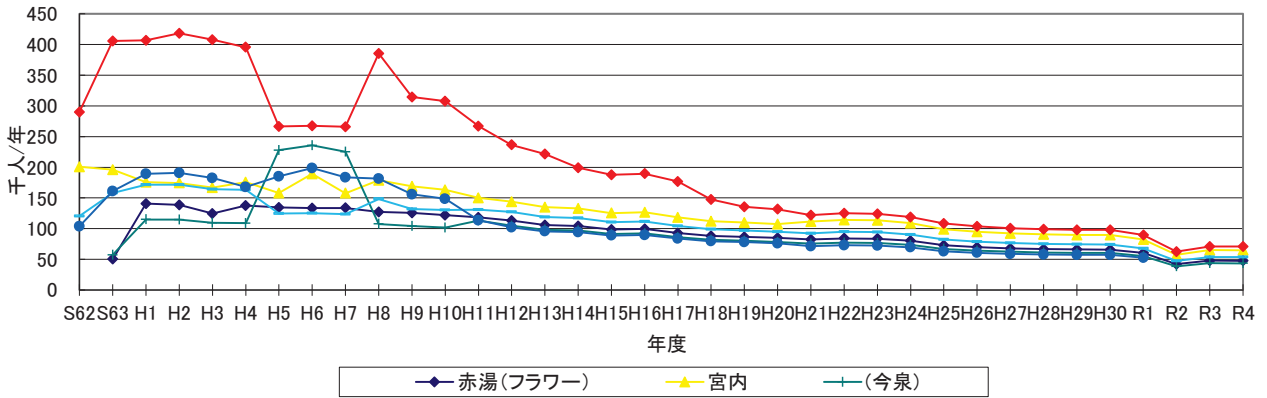
各駅乗車人数推移(米坂線)



各駅乗車人数推移(陸羽東西線)



各駅乗車人数推移(フラワー長井線①)



各駅乗車人数推移(フラワー長井線②)

