

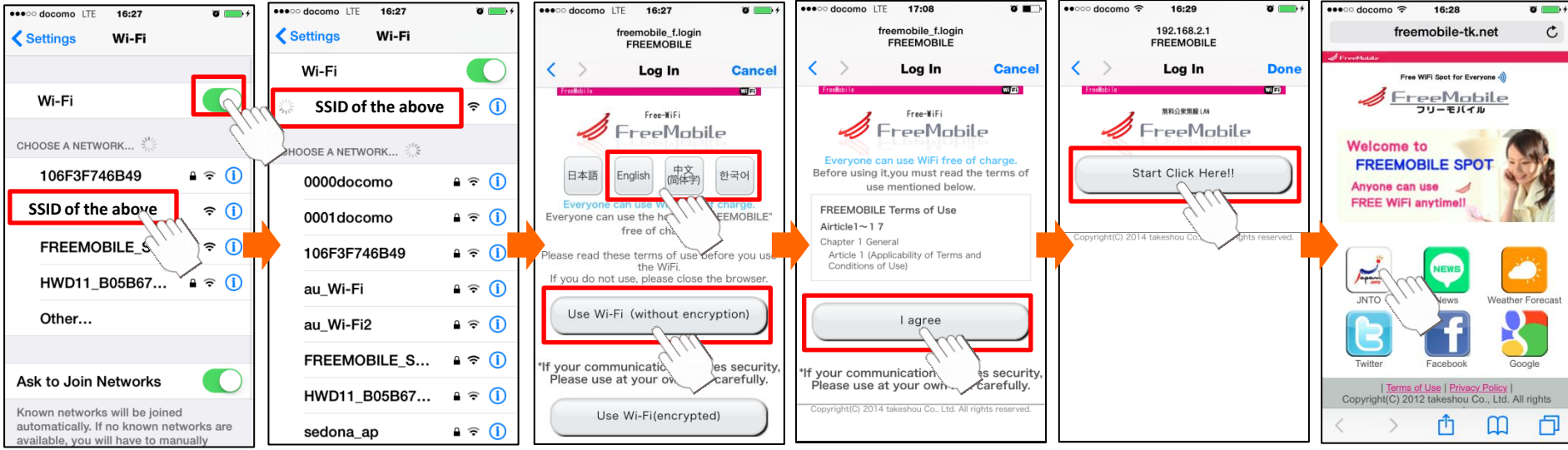
Wi-Fi / SSID [Minato Oasis Wi-Fi]

※If the same screen is displayed again and again, please delete your Web browser's cache.
 如果在同一屏幕显示反复, 请清除浏览器的缓存。
 반복적으로 동일한 페이지가 표시되는 경우, 웹 브라우저의 캐시를 삭제하십시오.

[iPhone/iPad]

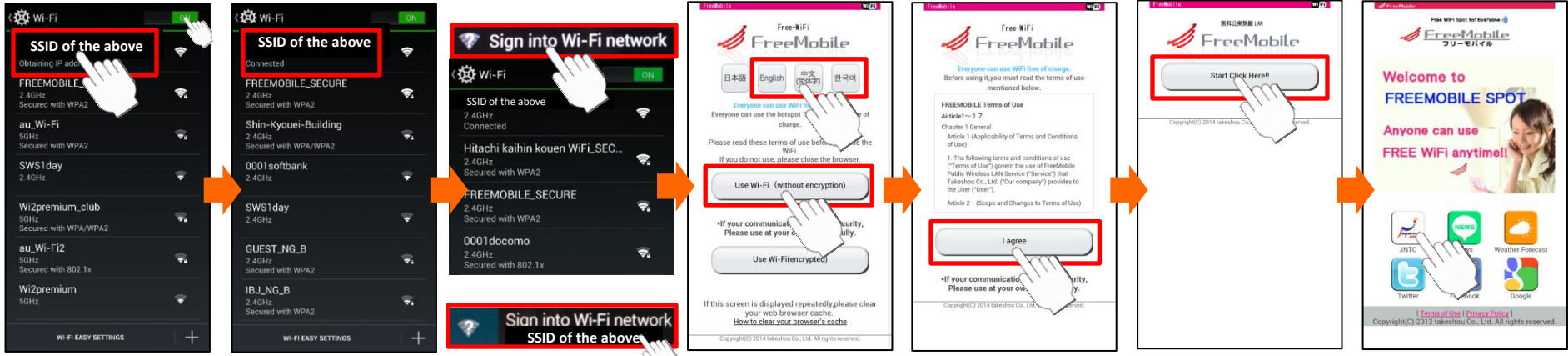


Contact Us: support@freemobile.jp



- ① Tap "Wi-Fi", and choose SSID of the above.
- ② Please wait a moment.
- ③ Tap "Use Wi-Fi" (without encryption)
- ④ Read the terms of use and tap "I agree".
- ⑤ Tap the button above.
- ⑥ It completes the connection.

[android/PC]



- ① Tap "Wi-Fi", and choose SSID of the above.
- ② After a few seconds, tap "Sign into Wi-Fi network" will be displayed on the screen edge.
- ③ Tap "Use Wi-Fi" (without encryption).
- ④ Read the terms of use and tap "I agree".
- ⑤ Tap the button above.
- ⑥ It completes the connection.

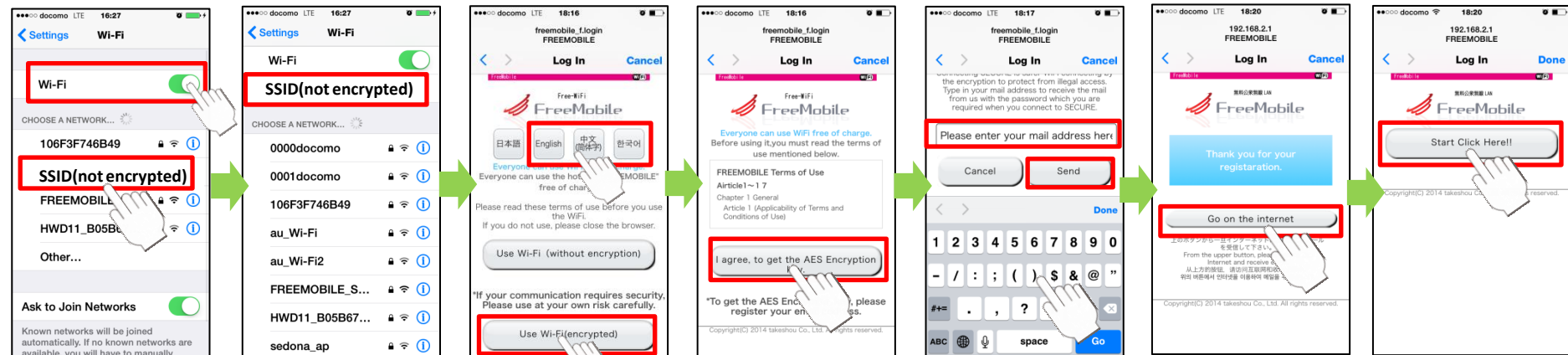
Wi-Fi/SSID「Minato Oasis Wi-Fi_SECURE」

How to connect with encryption (AES)

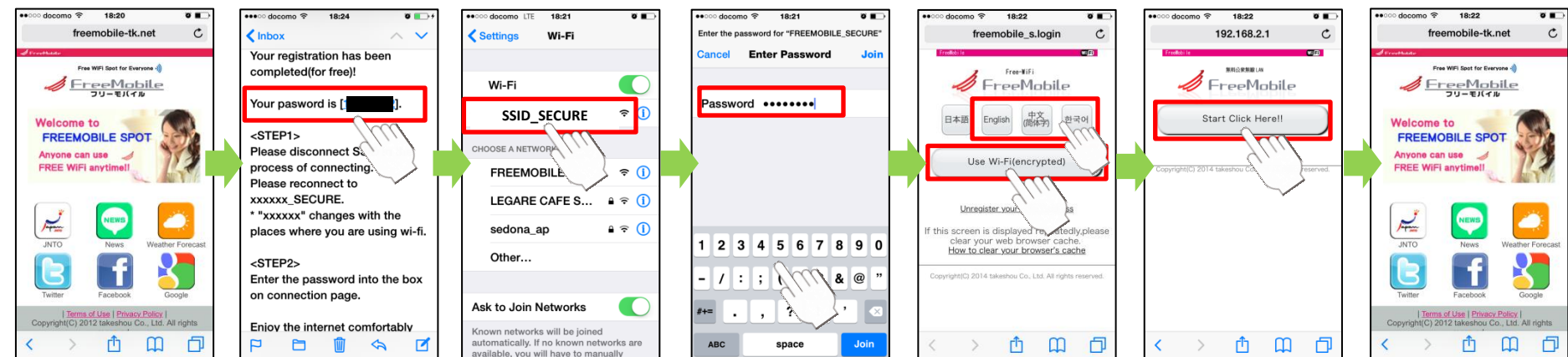
※If the same screen is displayed again and again, please delete your Web browser's cache.
 如果在同一屏幕显示反复, 请清除浏览器的缓存。
 반복적으로 동일한 페이지가 표시되는 경우, 웹 브라우저의 캐시를 삭제하십시오.

Contact Us: support@freemobile.jp

[iPhone/iPad]



- ① Tap "Wi-Fi", and choose unencrypted SSID.
- ② Please wait a moment.
- ③ Tap "Use Wi-Fi encrypted"
- ④ Read the terms of use and tap "I agree".
- ⑤ Enter your E-mail address, and tap "Send"
- ⑥ Tap the button above.



- ⑦ When this screen is open, please receive mail, and copy the password.
- ⑧ Tap encrypted SSID of the above.
- ⑨ Enter the password or paste it and wait a moment.
- ⑩ Tap "Use Wi-Fi encrypted"
- ⑪ Tap the button above.
- ⑫ It completes the connection.

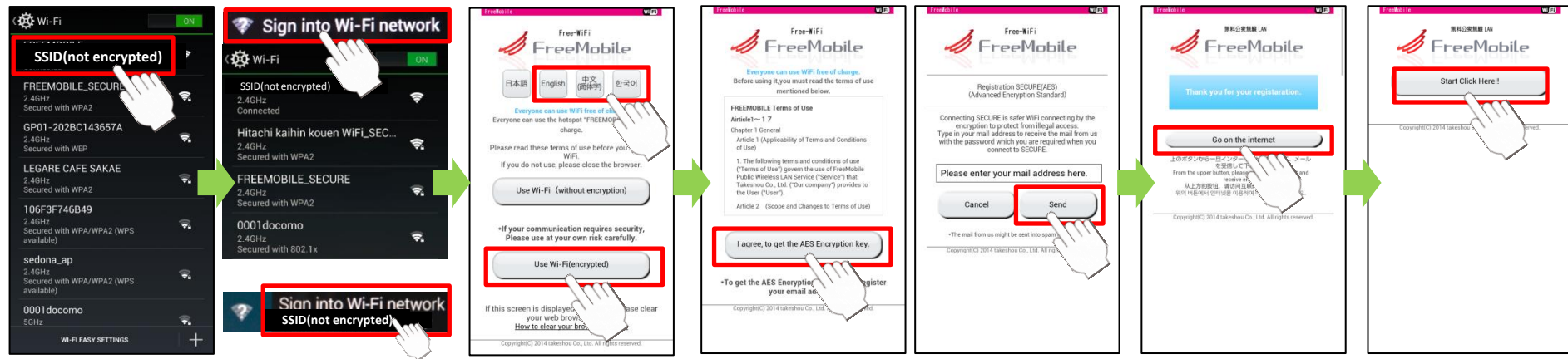
Wi-Fi/SSID「Minato Oasis Wi-Fi_SECURE」

How to connect with encryption (AES)

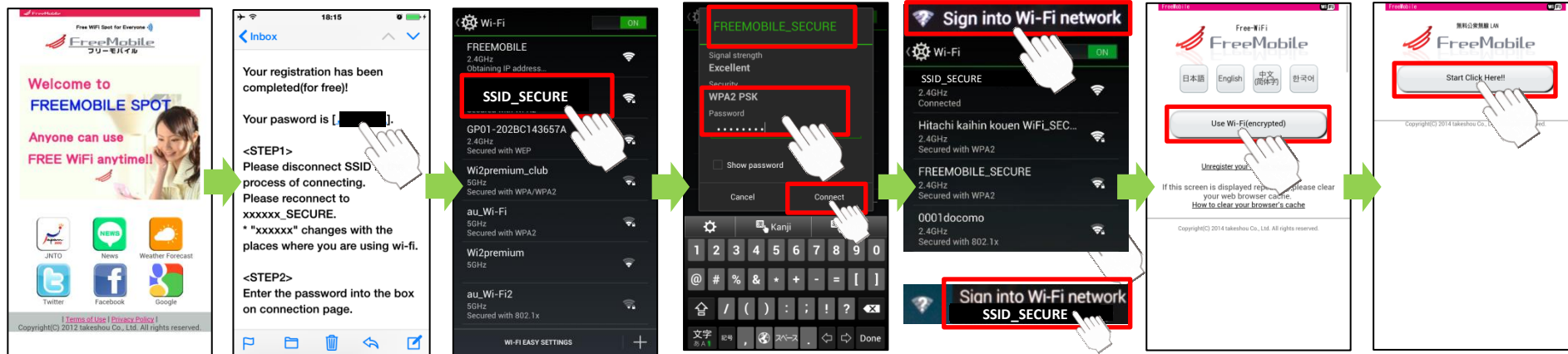
※If the same screen is displayed again and again, please delete your Web browser's cache.
 如果在同一屏幕显示反复, 请清除浏览器的缓存。
 반복적으로 동일한 페이지가 표시되는 경우, 웹 브라우저의 캐시를 삭제하십시오.

Contact Us: support@freemobile.jp

[android/PC]



- ① Tap “Wi-Fi”,
- ② After a few seconds, tap “Sign into Wi-Fi network” and choose unencrypted SSID.
- ③ Tap “Use Wi-Fi encrypted”
- ④ Read the terms of use and tap “I agree”.
- ⑤ Enter your E-mail address, and tap “Send”
- ⑥ Tap the button above.



- ⑦ When this screen is open, please receive mail, and copy the password.
- ⑧ Tap “Wi-Fi”, and choose encrypted SSID of the above.
- ⑨ Enter the password or paste it.
- ⑩ After a few seconds, tap “Sign into Wi-Fi network” will be displayed on the screen edge.
- ⑪ Tap “Use Wi-Fi encrypted”, and the button above, it completes the connection.